



# SORSO

## PIANO PARTICOLAREGGIATO DEL CENTRO STORICO E MATRICE DELL'INSEDIAMENTO IN ADEGUAMENTO AL PIANO PAESAGGISTICO REGIONALE



### Comune di Sorso

Il Sindaco:  
*dott. Fabrizio Demelas*

Assessore all'Urbanistica:  
*dott. Andrea Mangatà*

Responsabile del Servizio 2.1  
R.U.P.:  
*ing. Marco Delrio*

Coordinatore ufficio del Piano:  
*ing. Marco Delrio*

Ufficio del Piano:  
*arch. pian. jr. Marco Carta*  
*geom. Pietro Canu*

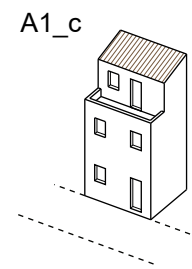
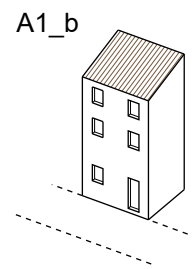
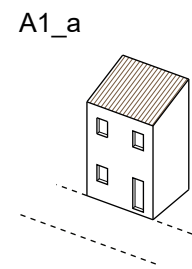
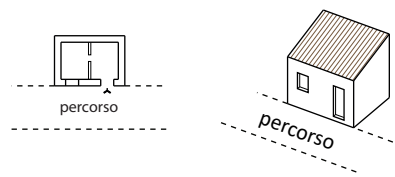
Redatto da:  
arch. Franco Galdieri

Gruppo di lavoro:  
Produzioni e Servizi Tecnici s.r.l.  
arch. Giovanni Galdieri arch. Luca Zairo  
arch. Stefania Nudda arch. Massimo Matta  
arch. pian. jr. Miriam Cambuli geom. Mariano Boi

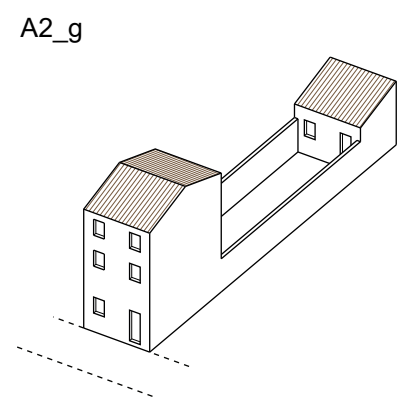
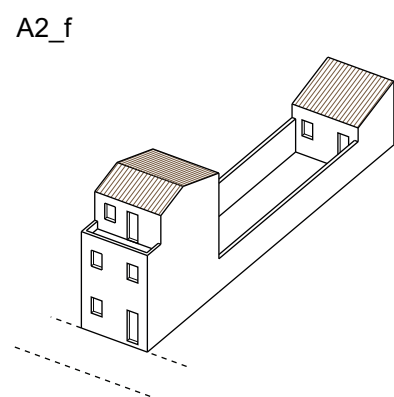
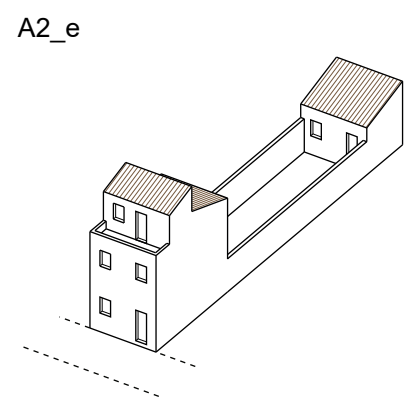
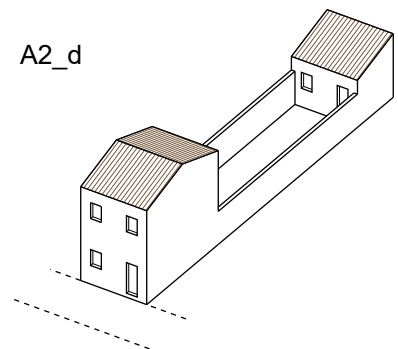
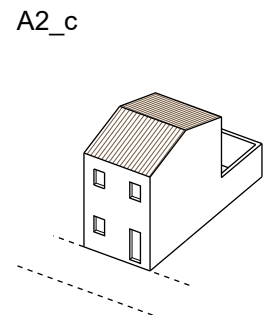
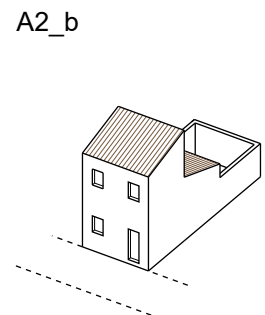
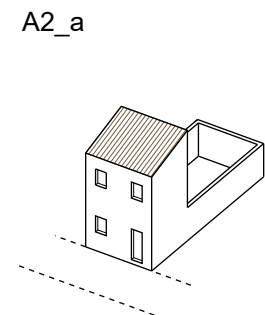
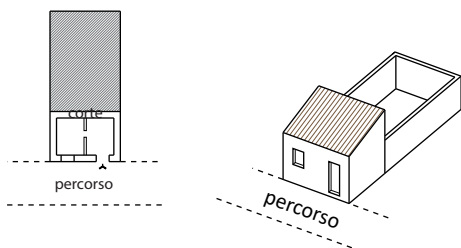
### B\_1\_ORIENTAMENTI PER LA PROGETTAZIONE: VARIANTI TIPOLOGICHE DI INTERVENTO (Allegato)

TIPO EDILIZIO A “CASA ELEMENTARE DEL NORD”

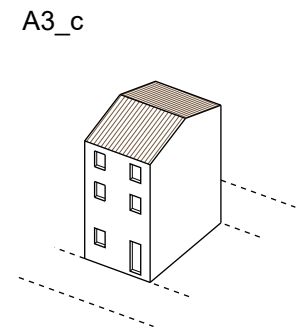
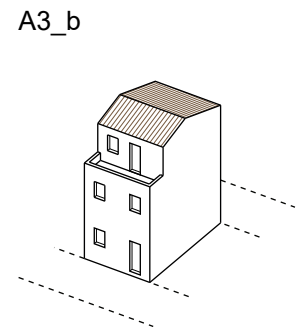
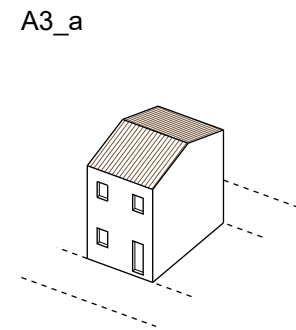
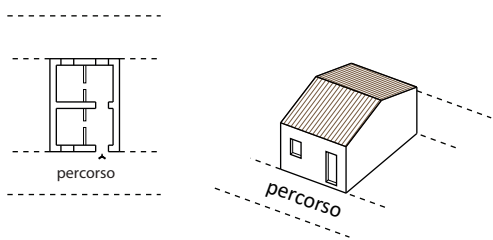
TIPO A1 CELLULA ELEMENTARE PRIVA DI CORTE



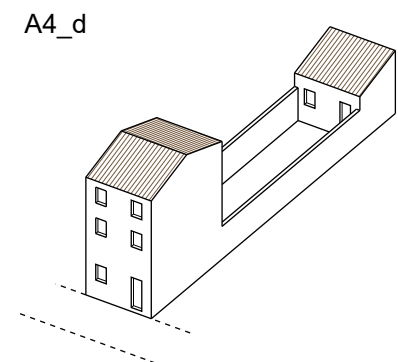
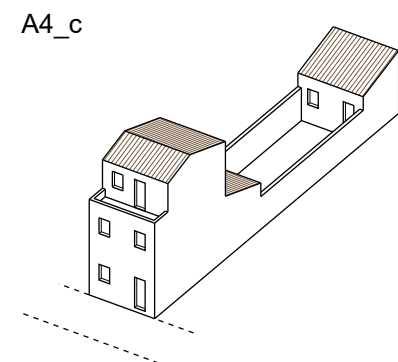
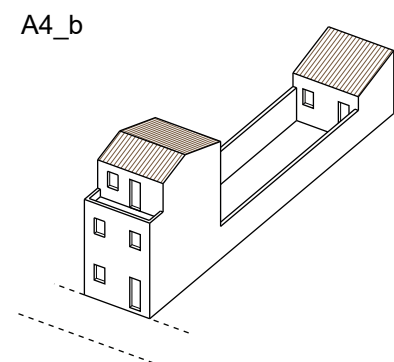
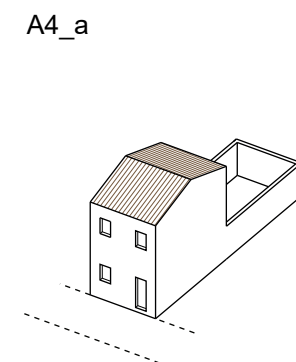
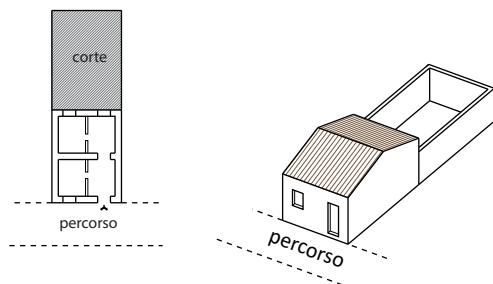
TIPO A2 CELLULA ELEMENTARE CON CORTE RETROSTANTE



TIPO A3 CELLULA DOPPIA PRIVA DI CORTE

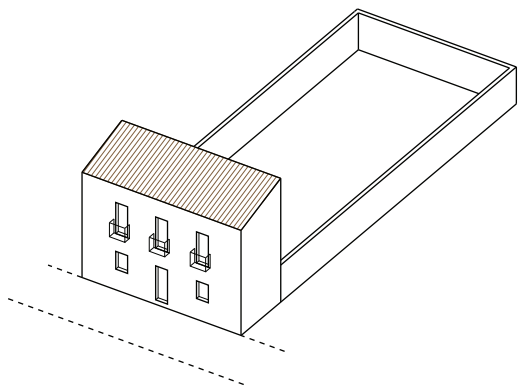


TIPO A4 CELLULA DOPPIA CON CORTE RETROSTANTE

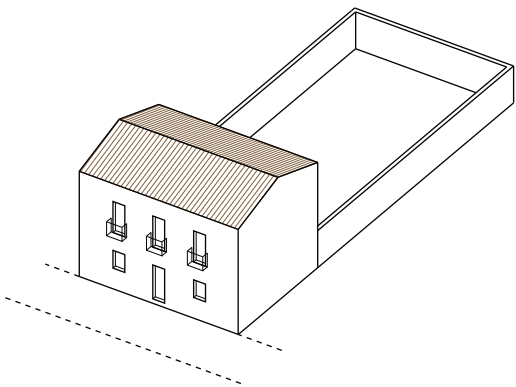


# TIPO EDILIZIO B “PALAZZO”

TIPO B1 - PALAZZO A UNA CELLULA DI PROFONDITÀ

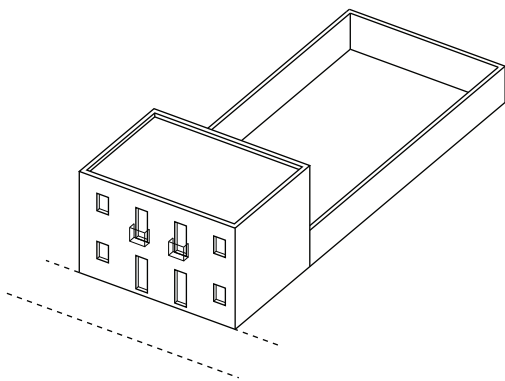


TIPO B2 - PALAZZO A DUE CELLULE DI PROFONDITÀ

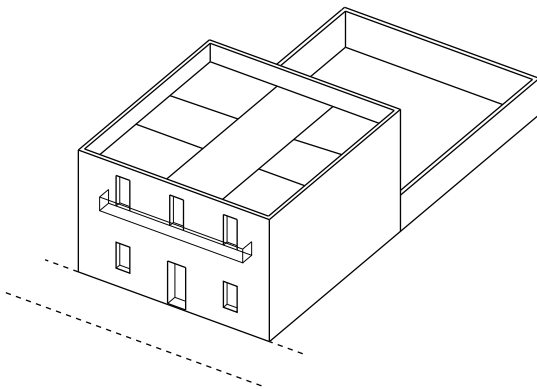


# TIPO EDILIZIO C “EDIFICIO IN SOSTITUZIONE O DI RECENTE FORMAZIONE”

TIPO C1 - EDIFICIO IN SOSTITUZIONE



TIPO C2 - EDIFICIO DI RECENTE FORMAZIONE



# TIPO EDILIZIO D “EDIFICIO ISOLATO NEL LOTTO”

TIPO D - VILLETTA DI RECENTE FORMAZIONE

