







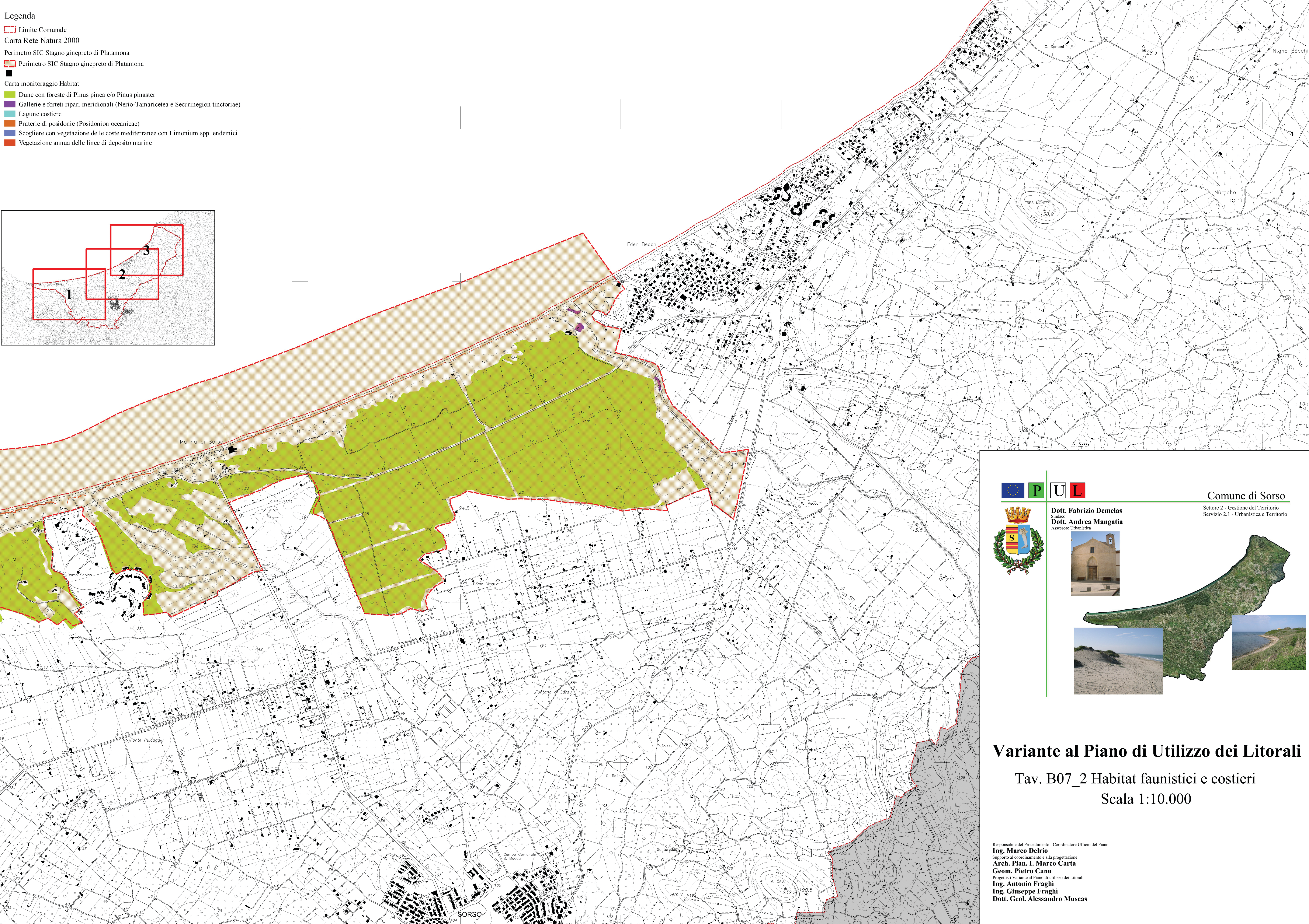
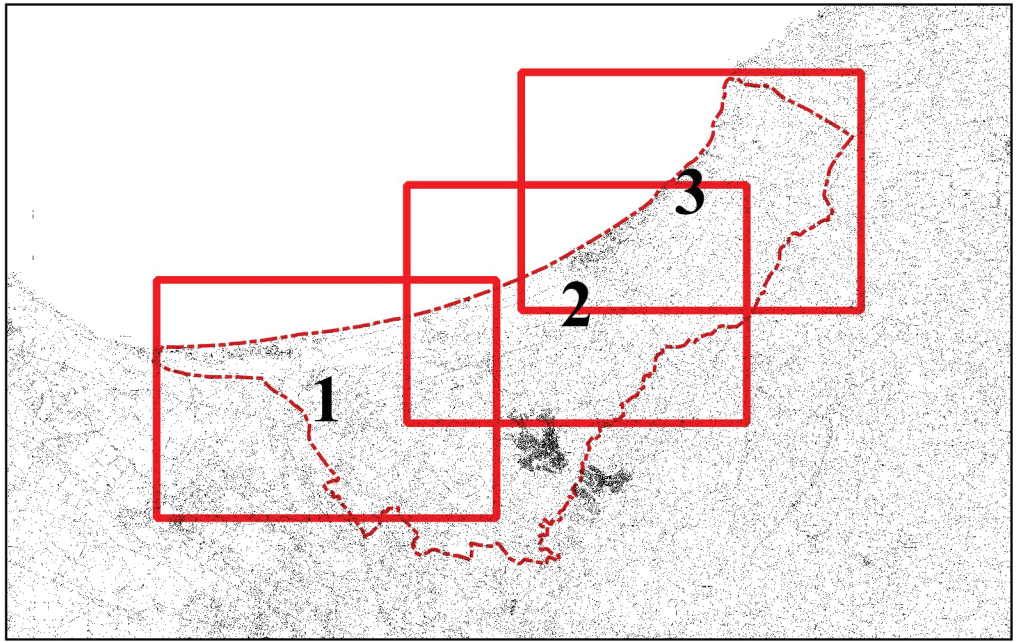


Legenda

-  Limite Comunale
- Carta Rete Natura 2000
- Perimetro SIC Stagno ginepreto di Platamona
-  Perimetro SIC Stagno ginepreto di Platamona
- Carta monitoraggio Habitat
-  Dune con foreste di Pinus pinea e/o Pinus pinaster
-  Gallerie e forteti ripari meridionali (Nerio-Tamaricetea e Securinegion tinctoriae)
-  Lagune costiere
-  Praterie di posidonie (Posidonium oceanicae)
-  Scogliere con vegetazione delle coste mediterranee con Limonium spp. endemici
-  Vegetazione annua delle linee di deposito marine





Comune di Sorso
Settore 2 - Gestione del Territorio
Servizio 2.1 - Urbanistica e Territorio

Dott. Fabrizio Demelas
Sindaco

Dott. Andrea Mangatia
Assessore Urbanistica



Variante al Piano di Utilizzo dei Litorali

Tav. B07_2 Habitat faunistici e costieri
Scala 1:10.000

Responsabile del Procedimento - Coordinatore Ufficio del Piano
Ing. Marco Delrio
Supporto al coordinamento e alla progettazione
Arch. Pian. I. Marco Carta
Geom. Pietro Canu
Progettisti Variante al Piano di utilizzo dei Litorali
Ing. Antonio Fraghi
Ing. Giuseppe Fraghi
Dott. Geol. Alessandro Muscas