




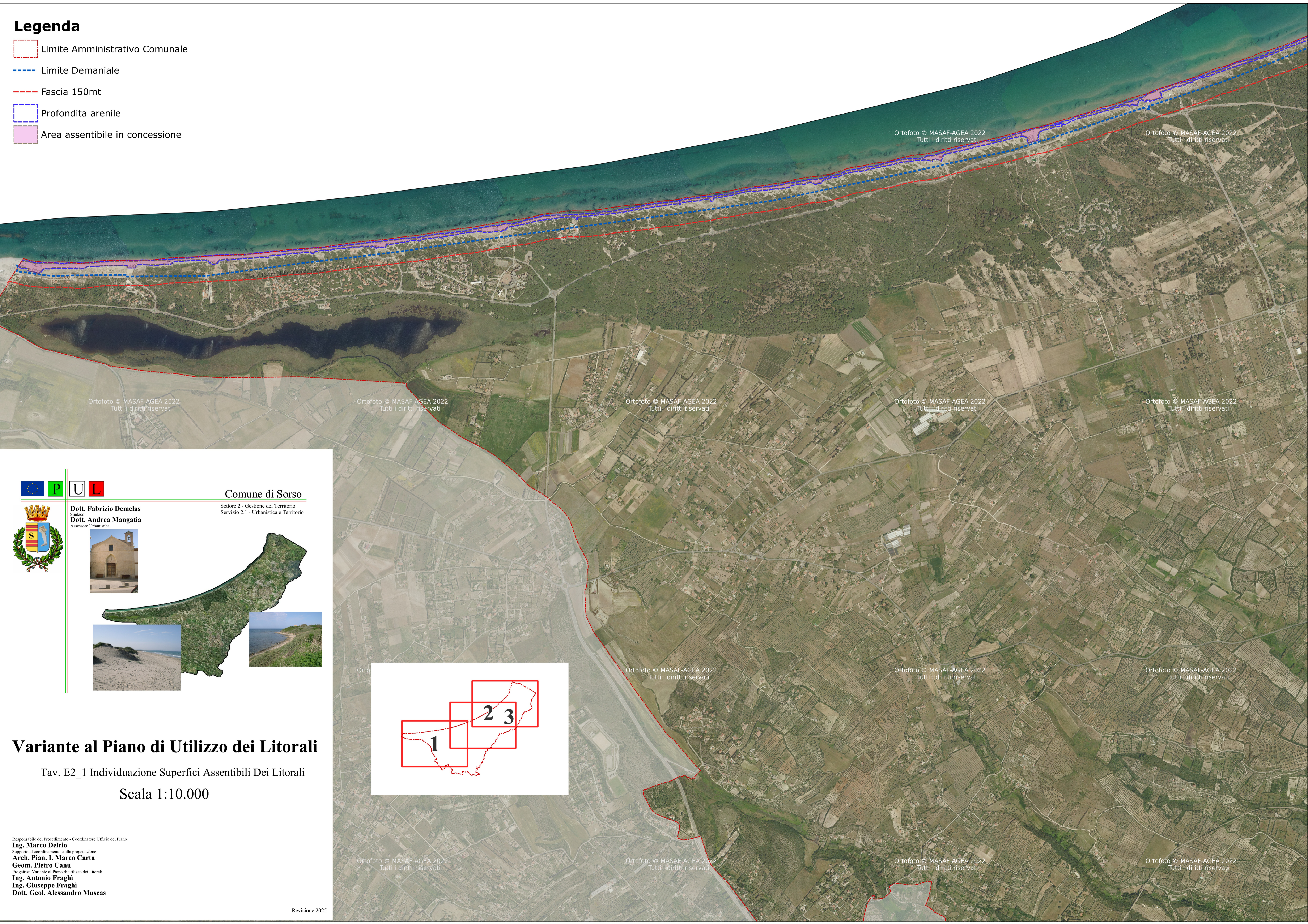
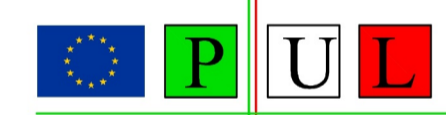




Legenda

-  Limite Amministrativo Comunale
-  Limite Demaniale
-  Fascia 150mt
-  Profondita arenile
-  Area assentibile in concessione




Comune di Sorso
Settore 2 - Gestione del Territorio
Servizio 2.1 - Urbanistica e Territorio

Dott. Fabrizio Demelas
Sindaco
Dott. Andrea Mangatia
Assessore Urbanistica



Variante al Piano di Utilizzo dei Litorali

Tav. E2_1 Individuazione Superfici Assentibili Dei Litorali

Scala 1:10.000

Responsabile del Procedimento - Coordinatore Ufficio del Piano
Ing. Marco Delrio
Supporto al coordinamento e alla progettazione
Arch. Pian. I. Marco Carta
Geom. Pietro Canu
Progettisti Variante al Piano di utilizzo dei Litorali
Ing. Antonio Fraghi
Ing. Giuseppe Fraghi
Dott. Geol. Alessandro Muscas

